

AURA

*central*











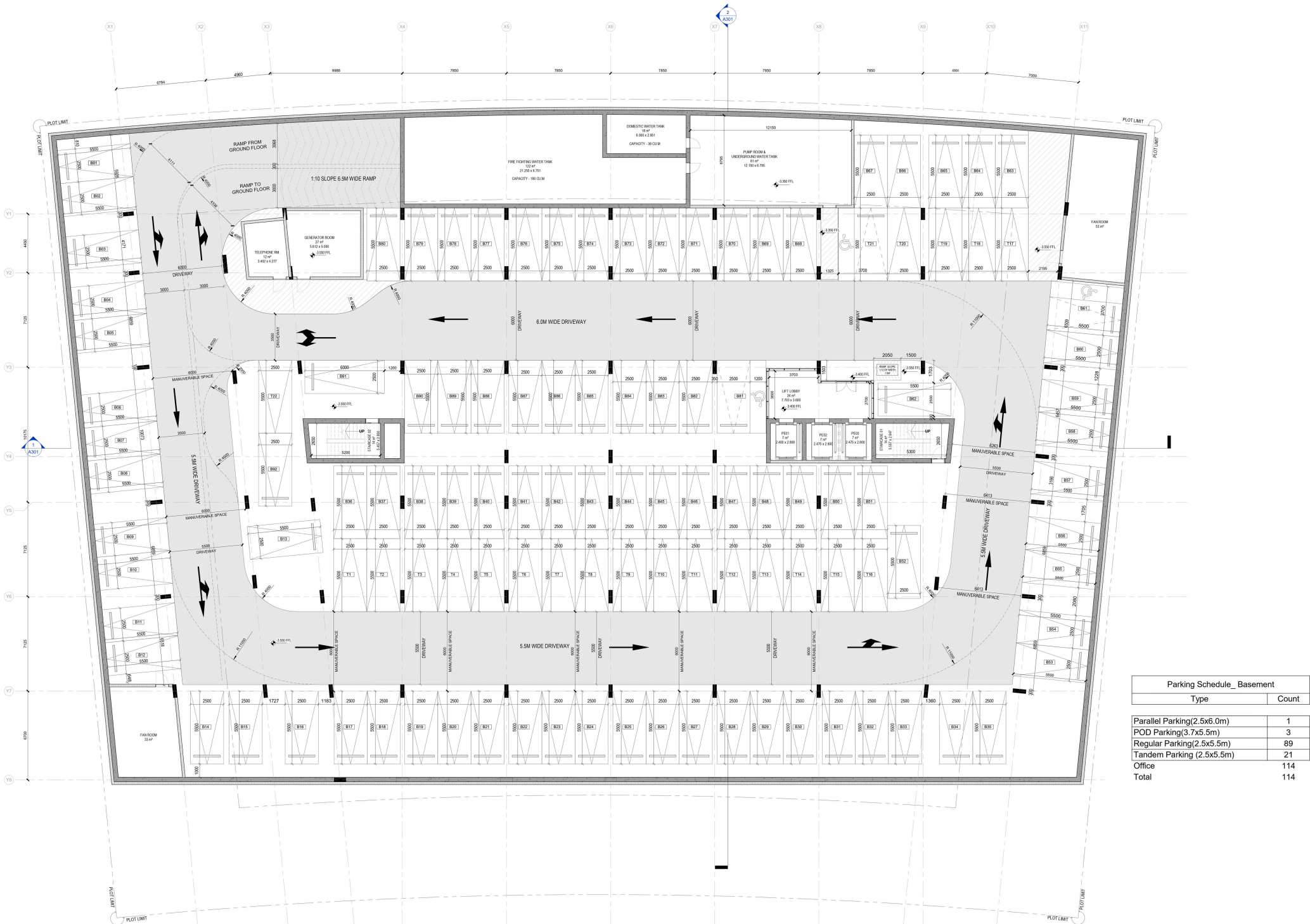




A

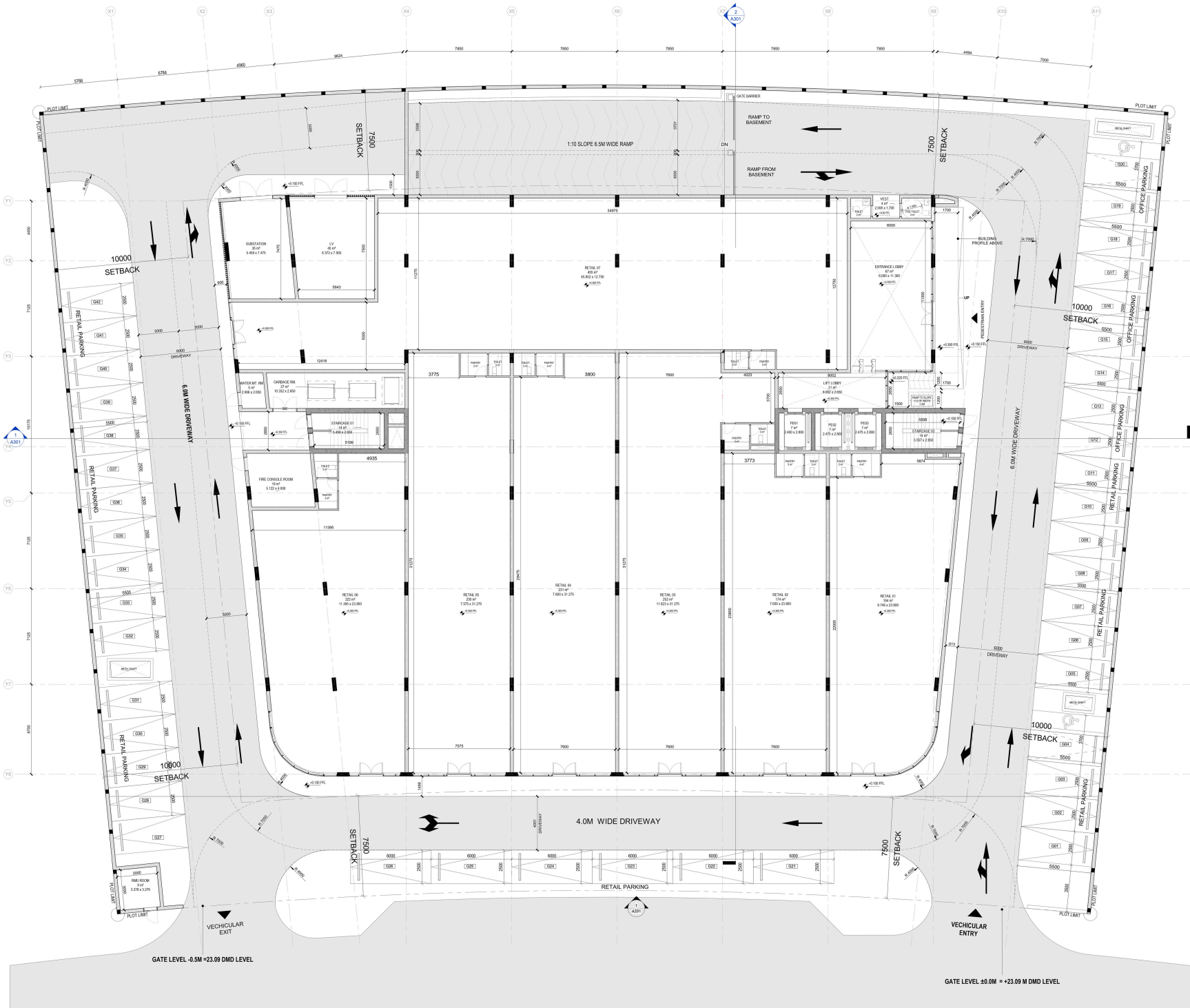
B

卫生间



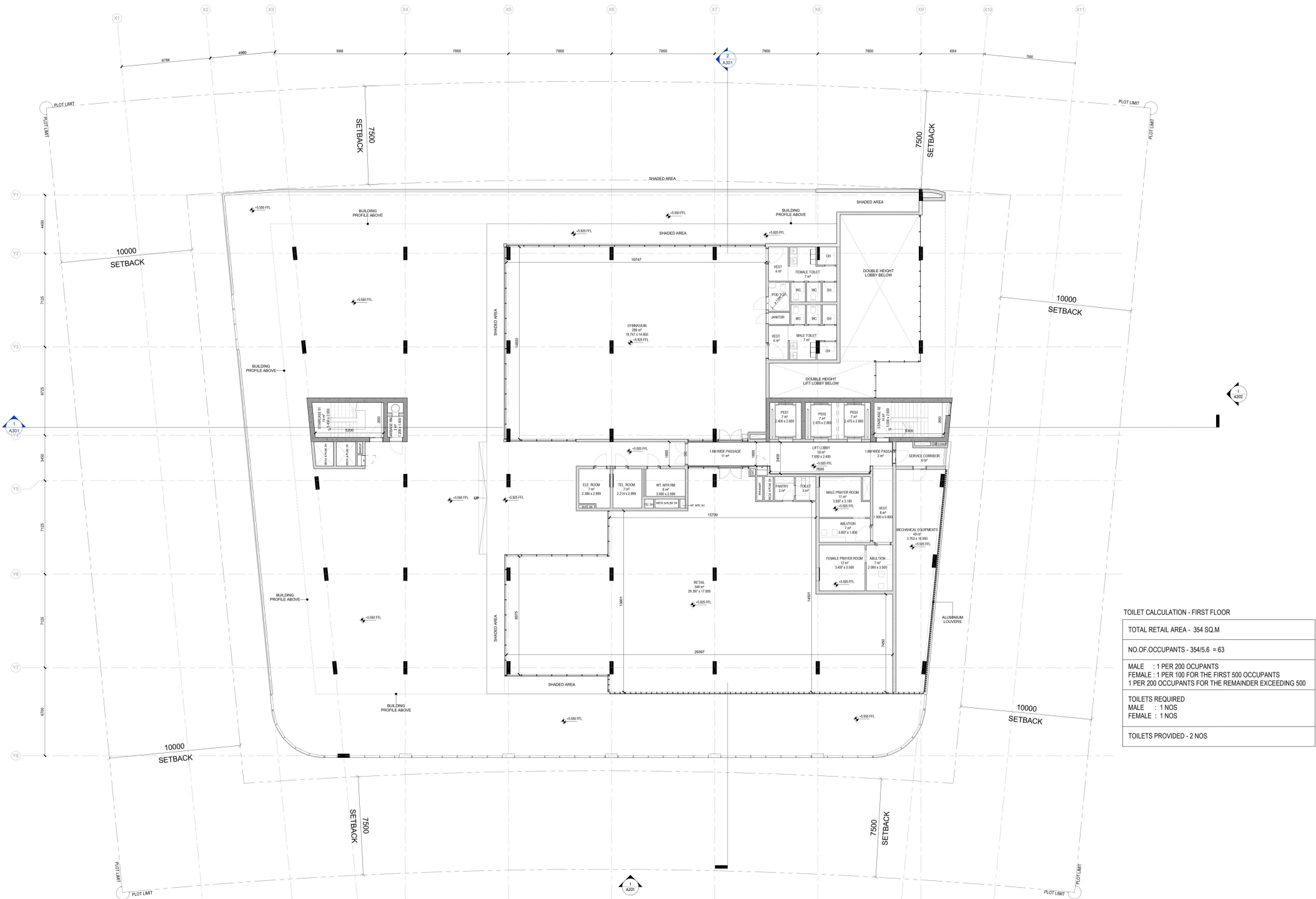
Parking Schedule_Basement	
Type	Count
Parallel Parking(2.5x6.0m)	1
POD Parking(3.7x5.5m)	3
Regular Parking(2.5x5.5m)	89
Tandem Parking (2.5x5.5m)	21
Office	114
<b>Total</b>	<b>114</b>

# BASEMENT FLOOR PLAN



Parking Schedule_Ground Floor	
Type	Count
POD Parking(3.7x5.5m)	1
Regular Parking(2.5x5.5m)	8
Office	9
Parallel Parking(2.5x6.0m)	6
POD Parking(3.7x5.5m)	1
Regular Parking(2.5x5.5m)	26
Retail	33
<b>Total</b>	<b>42</b>

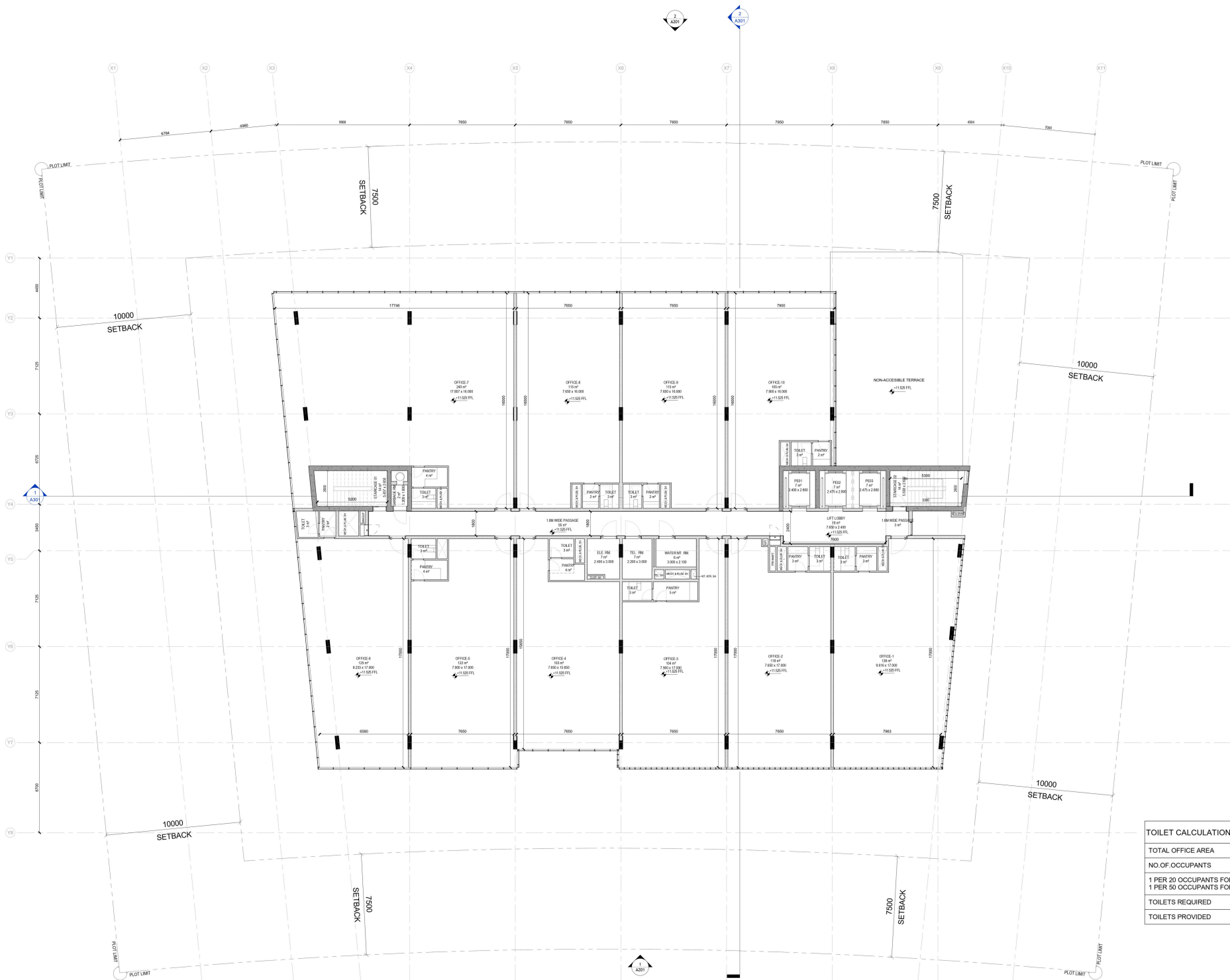
# GROUND FLOOR PLAN



**TOILET CALCULATION - FIRST FLOOR**

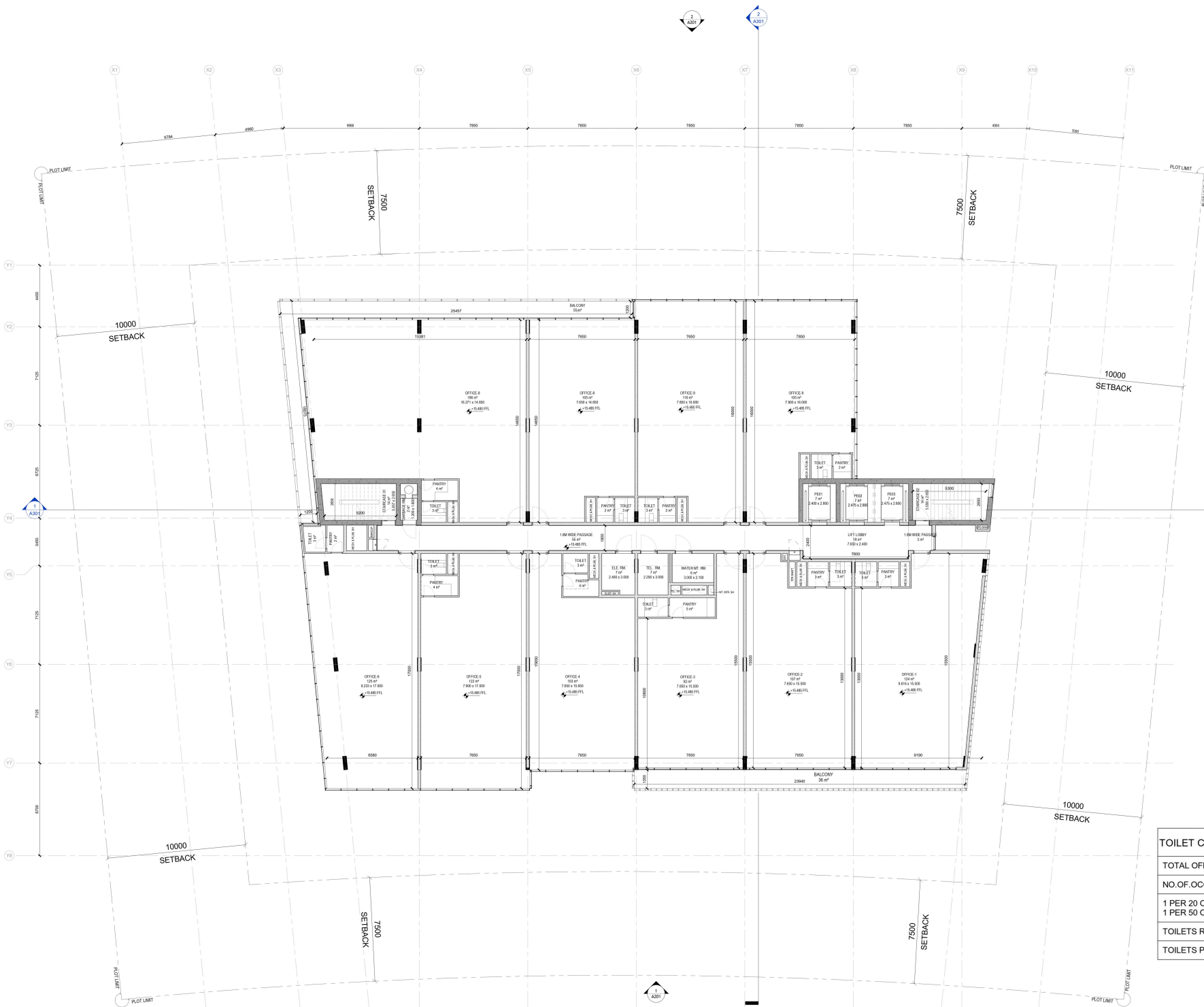
TOTAL RETAIL AREA - 354/5.6 SQ.M
NO OF OCCUPANTS - 354/5.6 = 63
MALE : 1 PER 200 OCCUPANTS FEMALE : 1 PER 100 FOR THE FIRST 500 OCCUPANTS 1 PER 200 OCCUPANTS FOR THE REMAINDER EXCEEDING 500
TOILETS REQUIRED MALE : 1 NOS FEMALE : 1 NOS
TOILETS PROVIDED - 2 NOS

# FIRST FLOOR PLAN



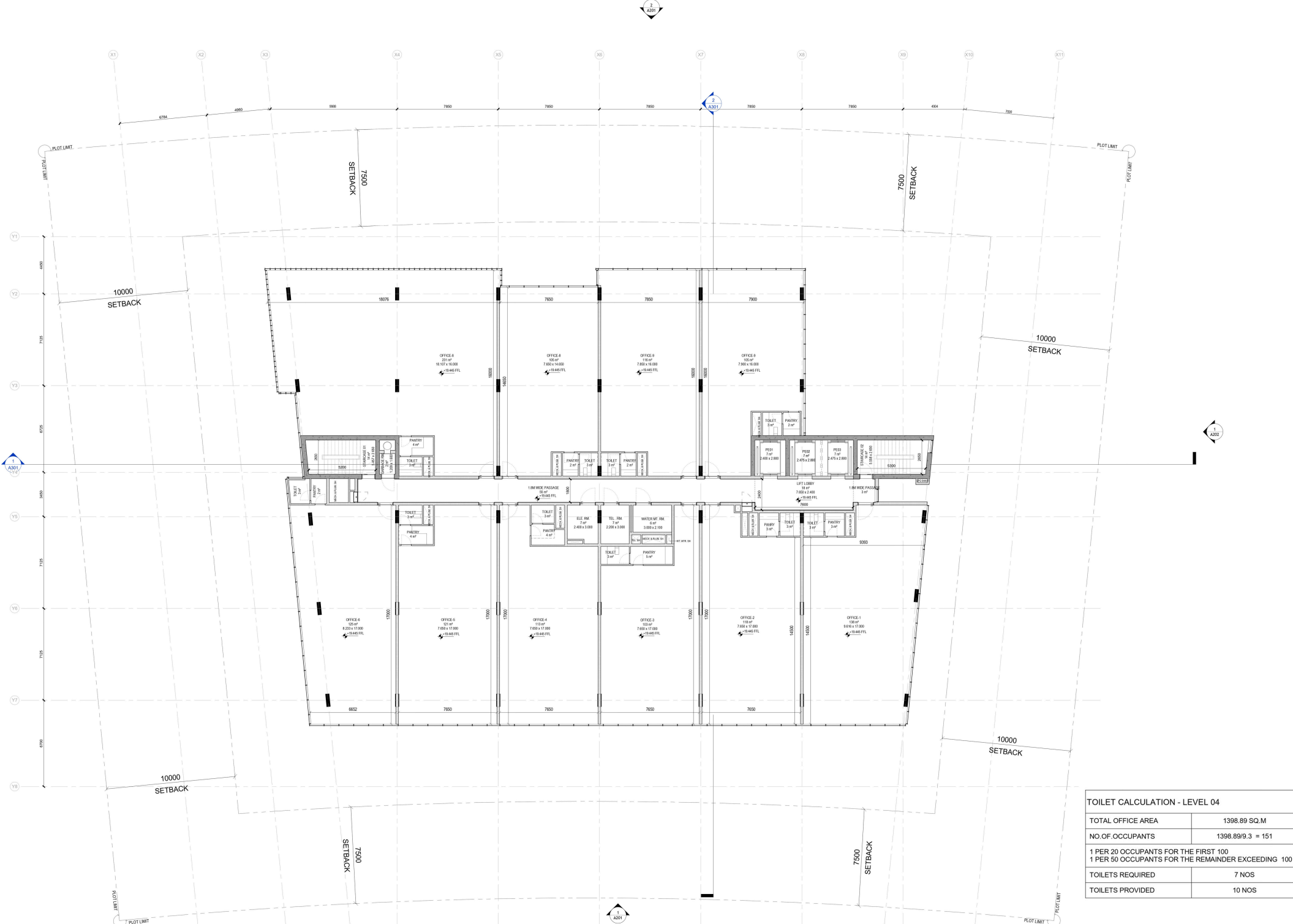
TOILET CALCULATION - LEVEL 02	
TOTAL OFFICE AREA	1418.39 SQ.M
NO. OF OCCUPANTS	1418.39/9.3 = 153
1 PER 20 OCCUPANTS FOR THE FIRST 100 1 PER 50 OCCUPANTS FOR THE REMAINDER EXCEEDING 100	
TOILETS REQUIRED	7 NOS
TOILETS PROVIDED	10 NOS

# SECOND FLOOR PLAN



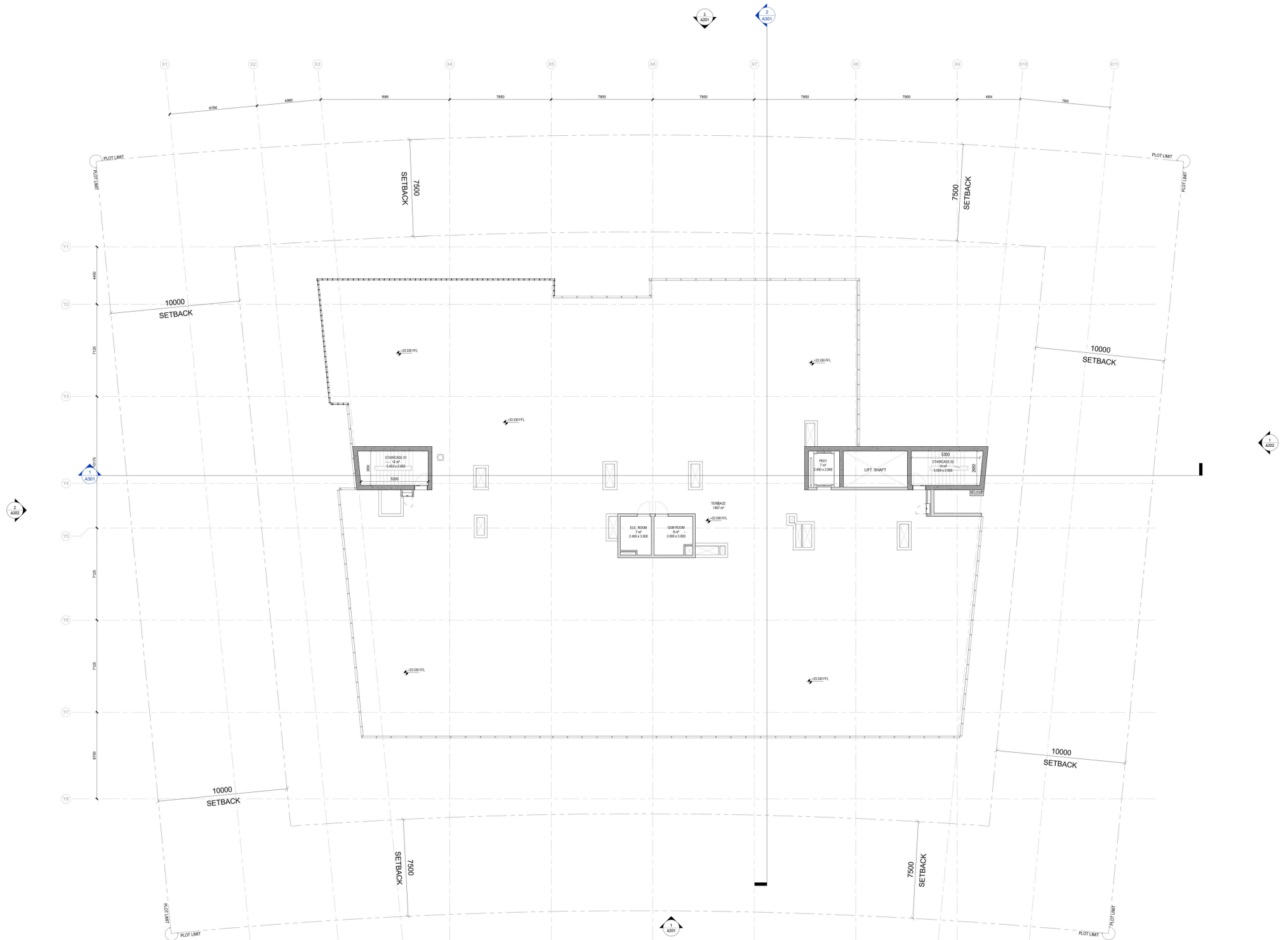
TOILET CALCULATION - LEVEL 03	
TOTAL OFFICE AREA	1325.54 SQ.M
NO.OF.OCCUPANTS	1325.54/9.3 = 143
1 PER 20 OCCUPANTS FOR THE FIRST 100 1 PER 50 OCCUPANTS FOR THE REMAINDER EXCEEDING 100	
TOILETS REQUIRED	7 NOS
TOILETS PROVIDED	10 NOS

# THIRD FLOOR PLAN



# FOURTH FLOOR PLAN

TOILET CALCULATION - LEVEL 04	
TOTAL OFFICE AREA	1398.89 SQ.M
NO.OF.OCCUPANTS	$1398.89/9.3 = 151$
1 PER 20 OCCUPANTS FOR THE FIRST 100 1 PER 50 OCCUPANTS FOR THE REMAINDER EXCEEDING 100	
TOILETS REQUIRED	7 NOS
TOILETS PROVIDED	10 NOS



# ROOF FLOOR PLAN



# *Reach Us*

## **Email**

[info@aurainfinite.ae](mailto:info@aurainfinite.ae)

## **Office**

2412, Burlington Tower,  
Business Bay, Dubai, UAE.

[www.aurainfinite.ae](http://www.aurainfinite.ae)

This brochure is for conceptual purpose only. its contains are not legally binding.





AURA

*central*